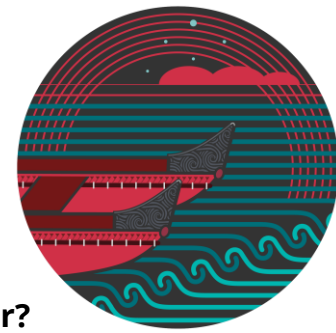


Hourua Pae Rau – Strategy & Business Design



Titiro atu ki nga taumata o te moana – Look beyond the horizon to the future



What we do

- ✓ We create tailored outcomes **by Māori, for Māori and with Māori**, by shaping organisational strategies, operating models and supporting business transformation
- ✓ We support government agencies to better **fulfil their obligations as a Treaty partner**, improving outcomes for Māori by taking a Te Ao Māori approach to our mahi.
- ✓ **We co-design and implement** transformative strategies that help Government remain agile and responsive to Māori, gathering data and information, and creating and presenting project deliverables.
- ✓ We serve as **trusted advisors to our clients**, partnering with them to bring a Te Ao Māori perspective and understanding to support clear enterprise choices about where to invest and how best to affect change to **improve outcomes for Māori**.



What skills & backgrounds are we looking for?

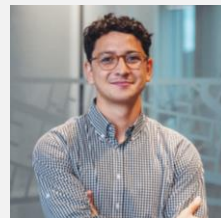
- ✓ A passion for **Te Reo** and **Mātauranga Maori**
- ✓ Combining logical thinking with creativity to approach **problem-solving** in a unique way
- ✓ A passion for upholding **Te Tiriti** and incorporating a **Te Ao Māori approach** into the work that we do
- ✓ **Excellent communication** and **interpersonal skills**
- ✓ A desire to seek out opportunities to **continually learn** and bring a **positive outlook** to new challenges

Recent joiners and their experiences:



Kerira Tapene
Analyst, Auckland
*Ngāti Hine, Te Rarawa,
Ngāti Tūwharetoa,
Ngāti Porou*

My first few weeks at Deloitte have been great. I am especially thankful to my buddy Jack, Hourua Pae Rau and the Auckland S&BD team for welcoming me, it's been great getting to know you all. Deloitte has shown me to be yourself no matter what and I am truly blown away by the diverse group of people here. I look forward to the year ahead!



TJ Va'a
Analyst, Wellington
Whakatōhea, Ngāi Tahu

Deloitte offers an environment where I get the opportunity to learn and grow everyday. The ability to combine the development of organisational strategies, with my passion for my culture, is one of the key reasons I chose to begin my professional career at Deloitte.



Ben Bielski
Manager, Wellington
*Ngāti Kahungunu,
Ngāti
Rongomaiwahine*

I joined Deloitte for opportunities to grow and learn quickly. I get opportunities to work with a range of clients on complex problems that have a direct social impact. Hourua Pae Rau offers me the opportunity to grow in my culture and understanding of Te Ao Māori while supporting organisations to do the same.